



Granzyme H Polyclonal Antibody

Catalog No	YP-Ab-00417
Isotype	IgG
Reactivity	Human;Rat;Mouse;
Applications	WB;IHC;IF;ELISA
Gene Name	GZMH
Protein Name	Granzyme H
Immunogen	The antiserum was produced against synthesized peptide derived from human GRAH. AA range:51-100
Specificity	Granzyme H Polyclonal Antibody detects endogenous levels of Granzyme H protein.
Formulation	Liquid in PBS containing 50% glycerol, 0.5% BSA and 0.02% sodium azide.
Source	Polyclonal, Rabbit,IgG
Purification	The antibody was affinity-purified from rabbit antiserum by affinity-chromatography using epitope-specific immunogen.
Dilution	Western Blot: 1/500 - 1/2000. Immunohistochemistry: 1/100 - 1/300. Immunofluorescence: 1/200 - 1/1000. ELISA: 1/40000. Not yet tested in other applications.
Concentration	1 mg/ml
Purity	≥90%
Storage Stability	-20°C/1 year
Synonyms	GZMH; CGL2; CTSL2; Granzyme H; CCP-X; Cathepsin G-like 2; CTSL2; Cytotoxic T-lymphocyte proteinase; Cytotoxic serine protease C; CSP-C
Observed Band	23kD
Cell Pathway	Cytolytic granule .
Tissue Specificity	Constitutively expressed in NK cells.
Function	function:This enzyme is probably necessary for target cell lysis in cell-mediated immune responses.,similarity:Belongs to the peptidase S1 family.,similarity:Belongs to the peptidase S1 family. Granzyme subfamily.,similarity:Contains 1 peptidase S1 domain.,subcellular location:Cytoplasmic granules of cytolytic T-lymphocytes.,
Background	This gene encodes a member of the peptidase S1 family of serine proteases. Alternative splicing results in multiple transcript variants, at least one of which encodes a preproprotein that is proteolytically processed to generate a chymotrypsin-like protease. This protein is reported to be constitutively expressed in the NK (natural killer) cells of the immune system and may play a role in the cytotoxic arm of the innate immune response by inducing target cell death and by directly cleaving substrates in pathogen-infected cells. This gene is present in a



gene cluster with another member of the granzyme subfamily on chromosome 14. [provided by RefSeq, Nov 2015],

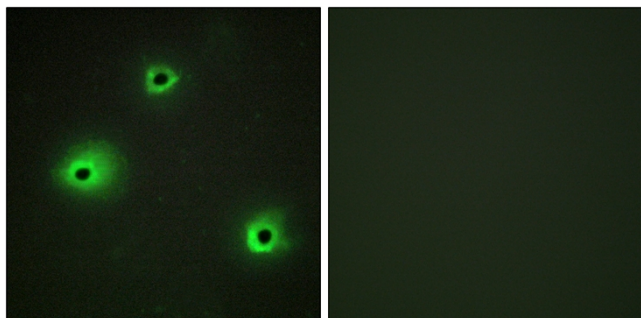
matters needing attention

Avoid repeated freezing and thawing!

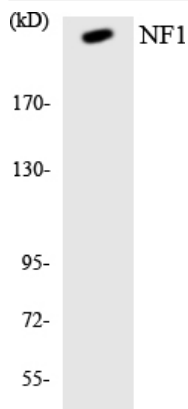
Usage suggestions

This product can be used in immunological reaction related experiments. For more information, please consult technical personnel.

Products Images

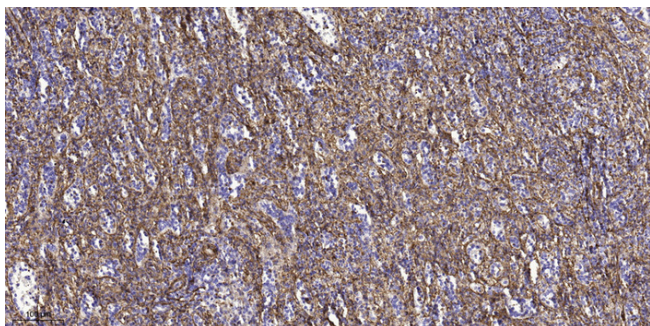


Immunofluorescence analysis of A549 cells, using GRAH Antibody. The picture on the right is blocked with the synthesized peptide.



Western blot analysis of lysates from K562 cells, using GRAH Antibody. The lane on the right is blocked with the synthesized peptide.

Western blot analysis of the lysates from HepG2 cells using NF1 antibody.



Immunohistochemical analysis of paraffin-embedded human spleen tissue. 1, primary Antibody was diluted at 1:200(4° overnight). 2, Sodium citrate pH 6.0 was used for antigen retrieval(>98°C, 20min). 3, Secondary antibody was diluted at 1:200